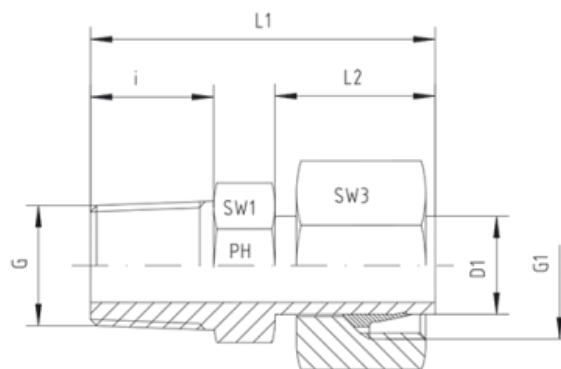
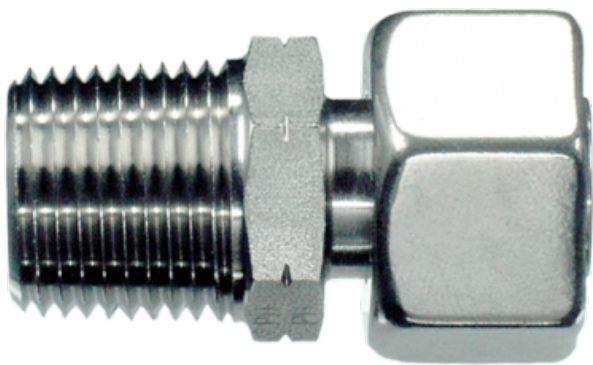


Rubrik 8.157

NPT - Pre-Assembled - SC



Pre-Assembled

Thread: NPT

Port D1 is pre-assembled. Final assembly in appropriate body with approx. 1/2 turn beyond the point of clearly perceptible resistance.

Pressure	Tube O.D.	Thread		Approx. Dimensions				
PN	D1	G	G1	L1	L2	i	SW1	SW3

Series L

315	6	1/8" NPT	M 12 x 1,5	32,0	19,0	10,0	12	14
315	6	1/4" NPT	M 12 x 1,5	40,0	19,0	15,0	14	14
315	8	1/4" NPT	M 14 x 1,5	40,5	20,0	15,0	14	17
315	10	1/4" NPT	M 16 x 1,5	39,5	19,0	15,0	14	19
315	12	1/4" NPT	M 18 x 1,5	42,0	22,0	15,0	14	22
315	12	3/8" NPT	M 18 x 1,5	43,0	22,0	15,3	19	22
315	12	1/2" NPT	M 18 x 1,5	50,0	22,0	20,0	22	22
315	15	3/8" NPT	M 22 x 1,5			15,3	19	27
315	15	1/2" NPT	M 22 x 1,5	48,0	22,0	20,0	22	27
315	18	1/2" NPT	M 26 x 1,5	50,0	24,0	20,0	22	32
160	22	3/4" NPT	M 30 x 2	52,0	24,5	20,0	27	36
160	28	1" NPT	M 36 x 2	59,0	25,5	25,0	36	41
160	35	1 1/4" NPT	M 45 x 2	66,0	32,0	25,5	46	50
160	42	1 1/2" NPT	M 52 x 2	68,0	32,0	26,0	50	60

Series S

630	6	1/4" NPT	M 14 x 1,5	40,0	19,0	15,0	14	17
630	8	1/4" NPT	M 16 x 1,5	40,5	20,0	15,0	14	19
630	10	1/4" NPT	M 18 x 1,5	39,5	19,0	15,0	14	22
630	10	3/8" NPT	M 18 x 1,5	44,0	21,0	15,3	19	22
630	12	1/4" NPT	M 20 x 1,5	42,0	22,0	15,0	14	24
630	12	3/8" NPT	M 20 x 1,5	43,0	22,0	15,3	19	24
630	12	1/2" NPT	M 20 x 1,5	50,0	22,0	20,0	22	24
630	14	1/2" NPT	M 22 x 1,5	48,0	23,5	20,0	22	27
400	16	1/2" NPT	M 24 x 1,5	54,0	24,0	20,0	22	30
400	20	3/4" NPT	M 30 x 2	58,0	28,0	20,0	27	36
400	25	1" NPT	M 36 x 2	68,0	33,0	25,0	36	46
400	30	1 1/4" NPT	M 42 x 2	73,0	33,0	25,5	46	50
315	38	1 1/2" NPT	M 52 x 2	81,0	38,0	26,0	50	60